

APSE Renewables and
Climate Change Advisory Group
7 December 2011
Youth Hostel Assoc. Centre,
Manchester

SOLAR POWER IS COMING TO WREXHAM!

Philip Walton
Strategic and Performance Director
Wrexham County Borough Council



**“Predictions are very difficult;
especially about the future”**



This is Wrexham County Borough

Population: 132,000

504 Sq km

High tech
manufacturing

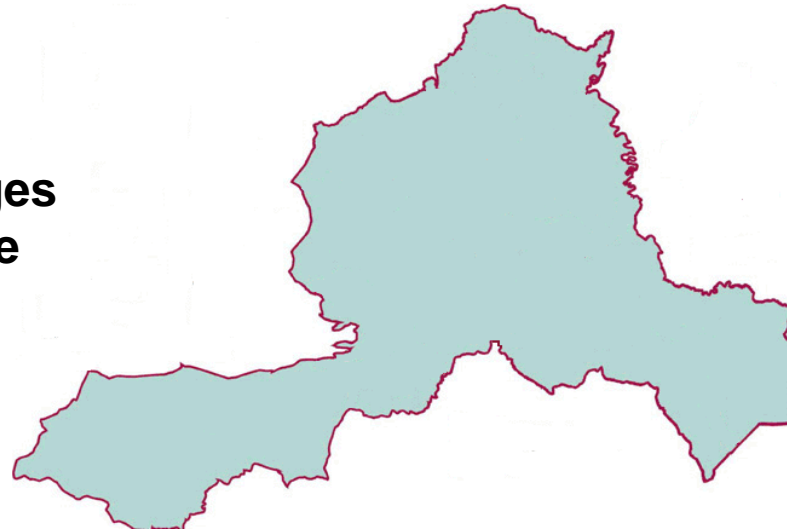
Beautiful villages
& countryside

Largest town in
North Wales

World Heritage
Site

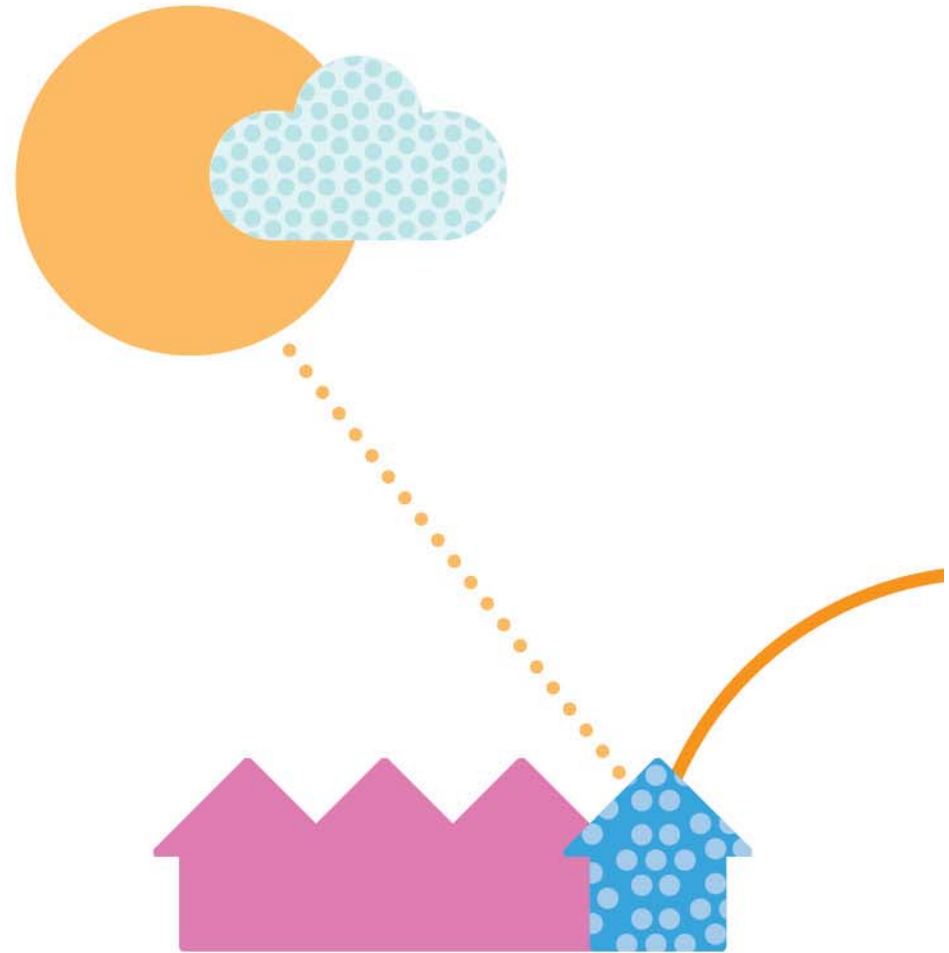


3.5% unemployment



Solar power is coming to Wrexham

Wrexham Council is installing around 30,000 solar photovoltaic (PV) panels on 3,000 of its social housing homes.



Chronology

- 2010 - Preparation (incl. soft market analysis)
 - 14 Feb 2011 - Board approval
 - 15 Feb 2011 - WG Procurement Framework collapses!
-

- Feb – July 2011
 - Appoint Steve Cirell
 - Appoint Eversheds
 - Appoint Communications Company
 - Other Frameworks
 - Procurement / Contract (Restricted)
 - Prepare DNO
 - Advertise Contract
-

- 30/31 Aug. 2011 - Interviews for Procurement Framework
- Up to 12 Sept. 2011
 - ‘Cool Off’ Period
 - Formalise Procurement Framework
 - Appoint Contractor



Chronology Cont.

- Sept/Oct 2011
 - Implementation and Mobilisation Planning;
 - Letters of Intent
- 14 Oct 2011
 - Rumours !!!
- 18 Oct 2011
 - Emergency Report to Board
- 25 Oct. 2011
 - Contract Signature
- 27 Oct. 2011**
 - **INSTALLATION commences**
- 31 Oct. 2011
 - Ministerial Consultation !!!
- 8 Nov. 22011
 - Board approved revised Business Case



Finance Model

Revised Model Nov 2011

	£
Total Project Value (est)	£44m
Net Surplus (est)	£15m

Original Model Feb 2011

	£
Total Project Value (est)	£65m
Net Surplus (est)	£25m



KEY ISSUES

- Proximity of SHARP
- Contractors use of Council's Depot
- Agreed Cash Flow/Payment Strategy
- DNO



How it will benefit the Council

.... Carbon Reduction

Each installation ought to save approx 1 tonne of CO2 per annum.

.... Income generation

A significant, long term and sustainable income stream over 25 years.

.... Addressing fuel poverty

With rising energy costs the installation of PV equipment ought to lift hundreds of tenants out of fuel poverty.

.... the local economy

This project provides direct opportunity for local businesses and local people to work for the Council's contractor. Also providing a number of training and development opportunities.

....Community leader

Reputationally this project will demonstrate Wrexham's commitment to carbon reduction, renewable energy and its intention to deliver.



How it will benefit the Tenant

.... Reduced electricity bills

Each tenant will be reducing the amount of electricity imported from the National Grid, thus reducing their annual electricity bill

....Individual carbon reduction

Each tenant will be contributing to making their own difference in relation to their carbon footprint.

.... No cost or burden

There is no cost or burden to the tenant whatsoever. The installation covers all maintenance & repairs needed.



Some Key Risks

- Timescales
- Weather
- Confidence in contractor
- Registration process to claim FIT
- Health and Safety (incl. Asbestos)
- Capacity
- Property suitability & access (qualifying criteria)
- Inequality
- DNO



**“Predictions are very difficult;
especially about the future”**



***THANK
YOU***

**SOLAR POWER
IS COMING
TO WREXHAM!**

Philip Walton
Strategic and Performance Director
Wrexham County Borough Council
Guildhall, Wrexham, LL11 1AY
Tel: 01978 297002
www.philip.walton@wrexham.gov.uk

